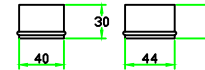
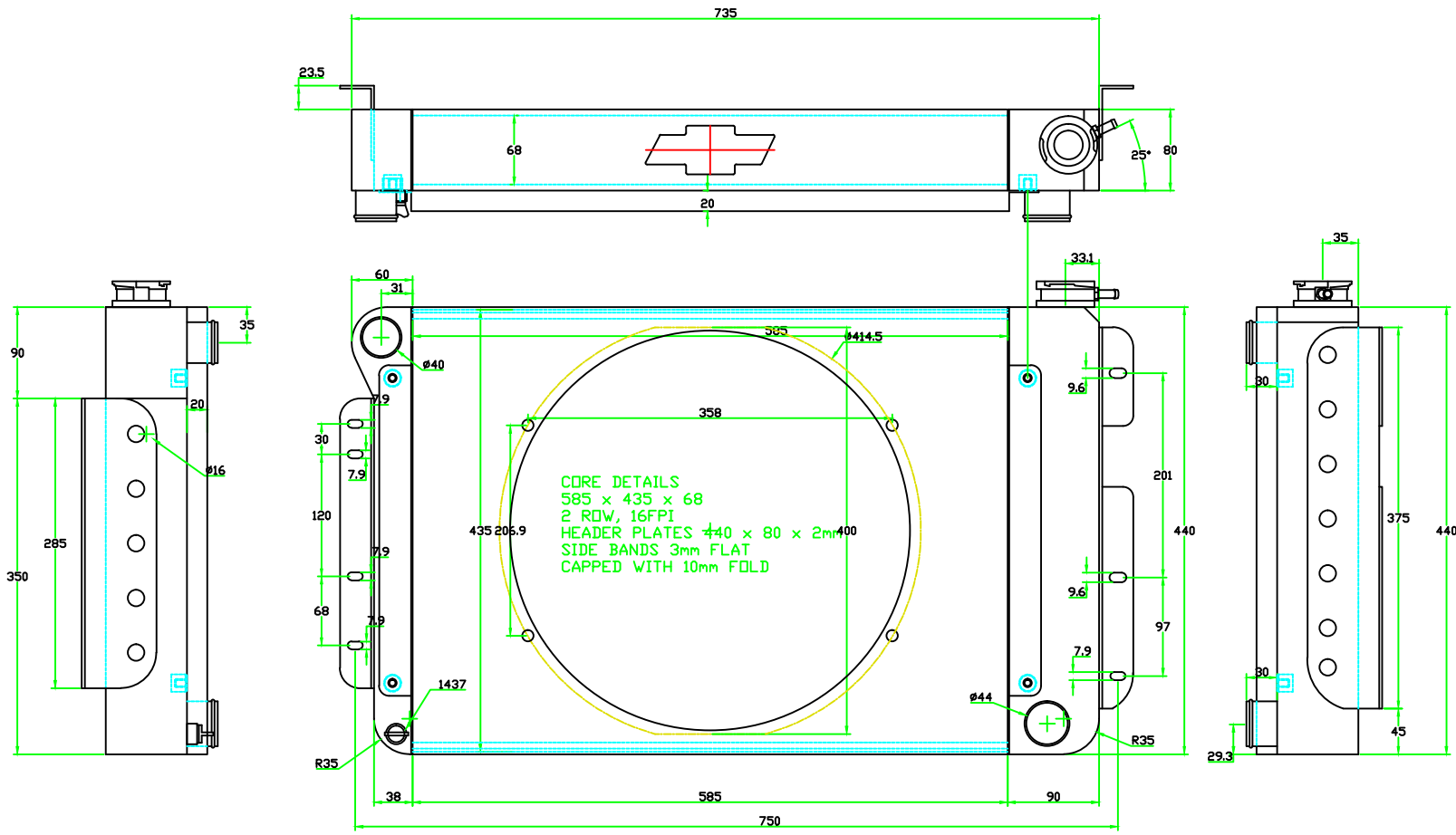


Outlets



Revisions:

A copied from 6077, removed temp boss and changed tanks to 3mm ground. RH 23-07-2011



MANUAL ALTERATIONS INVALID
ALL TOLERANCES ±0.5mm UNLESS INDICATED

Component	Qty	Dwg No
585 x 435 x 68mm core	1	-
Sidebands	2	NPN
Large Billet Filler	1	0423
40mm Inlet	1	see detail
44mm Outlet	1	see detail
LH Side Bracket	1	attached
RH Side Bracket	1	attached
RH Tank	1	attached
LH Tank	1	attached
Caps	2	attached
Drain Boss	1	1437
Shroud	1	as drawn
M8 Blind Boss	4	2258
16" Spal Fan	1	-
-	-	-

Drawing checked by:



103 Lahrs Road, Ormeau, QLD, 4208
Ph: 07 5547 1600 Fx: 07 5547 1666
info@pwr.com.au www.pwr.com.au

Description:

Leigh White 6077 Custom Rad

Material: Aluminium Finish: Polish

Scale: NTS Drawn by: R Hagedorn

Date: 23-07-2011

Dwg Number: -

Customer signature: